

Once the engine has started, squeeze and release the throttle to release the trigger lock and set the throttle in the idling position.

Note that, if restarting after a short break, you do not need to use the choke.

If the engine floods push both the blue choke lever and the decompression valve fully in. Squeeze the throttle and press the trigger lock button to hold the throttle open, then pull the starter handle repeatedly until the engine fires.

BASIC TECHNIQUES

Adjust the angle of the safety guard to suit the work, to do this, simply grasp the guard firmly and turn to the required angle.

Adopt a comfortable, balanced stance that allows a good view of the cut. Never use a cut-off saw when standing on an unstable platform, or on slippery, uneven ground.

Grasp the machine firmly with both hands and squeeze the throttle trigger to bring the wheel up to speed before starting the cut. Do not release the trigger again until the saw is clear of the work.

Use the dust suppression kit to control the dust created during the cut.

The dust suppression kit must only be used with diamond wheels, NOT with standard abrasive wheels.

Let the wheel and saw do the work – don't try to force it through the material.

Keep the saw and/or work as steady as possible. Keep the cut straight and do not allow the cutting wheel to twist in the cut.

EQUIPMENT CARE

Never push the equipment beyond its design limits. If it will not do what you want with reasonable ease and speed, assume you have the wrong tool for the job. Contact your local HSS Hire Shop for advice.

Handle the equipment with care. Avoid dropping it, knocking it, or otherwise exposing it to damage.

Never expose the equipment to excessive moisture, dust or dangerous/corrosive chemicals.

Keep the equipment clean. You will find this less of a chore if you clean up regularly rather than wait until the end of the hire period.

If working with very dusty materials, stop work and clean the saw more frequently.

When not in use, store the equipment somewhere clean, dry and safe from thieves.

Be sure to use the correct fuel: a 50 to 1 blend of unleaded petrol and two-stroke oil. Never use any other type of oil as a substitute for two-stroke oil.

FINISHING OFF

Move the ON/OFF switch into the OFF position. Wait for the engine to stop and for the cutting wheel to become stationary.

If the saw is not to be used again, remove the cutting wheel by simply reversing the fitting procedure (see Getting Started).

Finally, dust down the saw before returning it.



...any comments?

If you have any suggestions to enable us to improve the information within this guide please fax your comments or write to the Product Manager at the address below

Fax: 020 8687 5001

©HSS Hire Service Group Plc 1999 No. 912/01

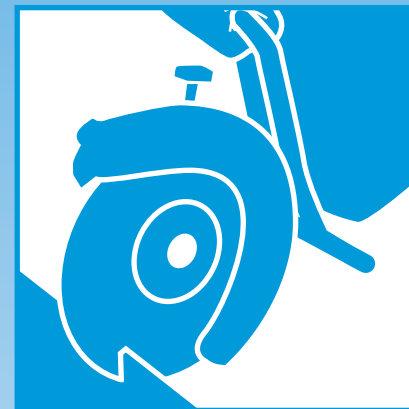
Group Office: 25 Willow Lane, Mitcham, Surrey CR4 4TS

Web Site: <http://www.hss.co.uk>

Operating & Safety Guide 912

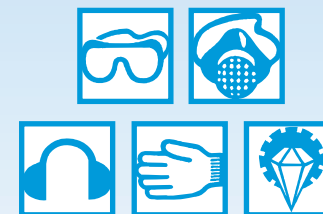
912/01

HSS Hire Shops



Cut Off Saw 350mm

A powerful 2 stroke petrol cut off saw capable of cutting to a depth of 125mm.



Code 07116



GENERAL SAFETY

For advice on the safety and suitability of this equipment contact your local HSS Hire Shop.


There is a serious risk of personal injury if you do not follow all instructions laid down in this guide.


This equipment should be used by an able bodied, competent adult who has read and understood these instructions. Anyone with either a temporary or permanent disability, should seek expert advice before using it.


Keep children, animals and bystanders away from the work area.

  Never use this equipment if you are ill, feeling tired, or under the influence of alcohol or drugs.

 Safety goggles **MUST** be worn by everyone in the work area.

 Some materials when cut contain substances which, when inhaled, can be harmful to health. A suitable mask must be worn when using this equipment. Respiratory protective equipment is available for hire, contact your local HSS Hire Shop for details.

 This equipment generates potentially harmful noise levels. To comply with health and safety at work regulations, ear defenders must be worn by everyone in the vicinity.

 Wear practical, protective clothing, gloves and footwear. Avoid loose garments and jewellery that could catch in moving parts, tie back long hair.

Exhaust Danger

Never operate petrol engines in a confined space.
The exhaust contains gases that can kill.

Ensure the work area is well lit and ventilated, if in doubt, ask about lighting and ventilation equipment at your local HSS Hire Shop.

If working above ground level, work from a stable, purpose-made platform. For prolonged, heavy work an access tower or something similar is a must.

Do not work near flammable gases or liquids, petrol or paint thinner fumes for example. Keep combustible materials at a safe distance - at least 5m.

Make sure you know how to switch this machine OFF before you switch it ON in case you get into difficulty.

Always switch OFF the equipment before making adjustments to it. Having switched OFF, always wait for moving parts to come to rest.

Check that you have removed all spanners before restarting. Never leave it running and unattended.

Fuel Safety

NEVER refuel while the engine is hot or running.

NEVER smoke or allow naked lights into the area while refuelling.

ALWAYS mop up fuel spillages as quickly as possible.

Change your clothes if you spill fuel on yourself.

ALWAYS store fuel in an approved container, in a cool, safe place away from the work area.


Never mix petrol/oil in the machine's fuel tank.

Check the condition of the equipment before use. If it shows signs of damage or excessive wear, return it to your local HSS Hire Shop.

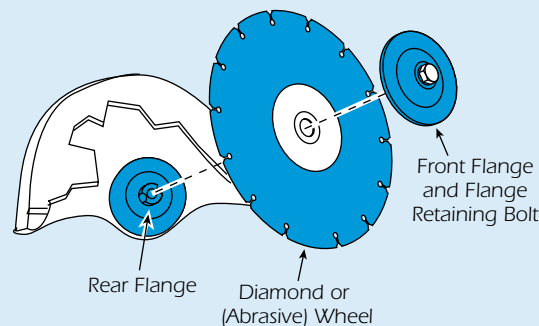
Ensure the guard is correctly fitted and secure before starting work.

COSHH information sheets are available from your local HSS Hire Shop.

GETTING STARTED

 HSS offer a choice of either diamond wheels or abrasive wheels. Diamond wheels are available to hire, with a wear charge for the amount of diamond used, alternatively it may be purchased outright.

Fitting the Wheel



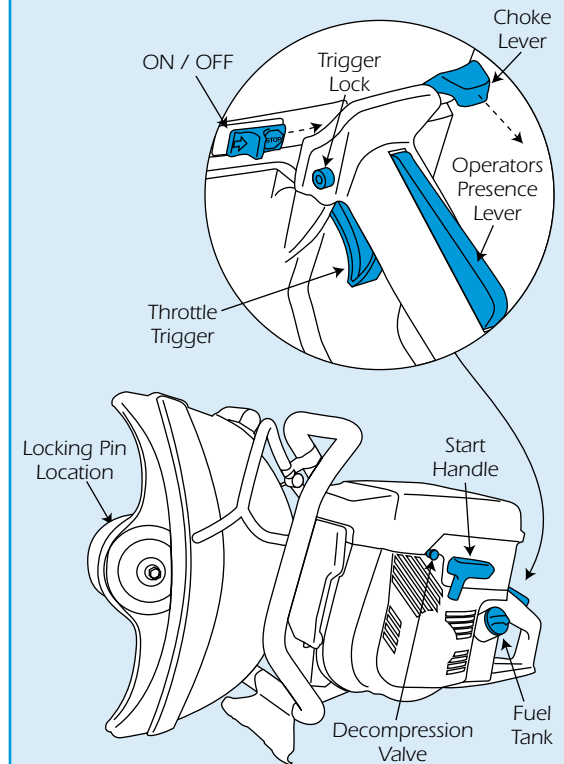
Abrasive wheels are available on a sale or return basis, contact your local HSS Hire Shop for advice.

Begin by fitting the appropriate 350mm wheel.

Immobilize the rear flange plate by inserting a locking pin into the hole in the drive belt housing.

Now, unscrew the flange-retaining bolt, remove the front flange plate and seat the new wheel onto the rear flange plate.

350mm Cut Off Saw



Refit the front flange plate and screw the flange-retaining bolt back into place, tightening this up using the spanner provided. DO NOT OVER-TIGHTEN.

Double check that both flange plates are secure, the wheel is central and spins freely.

To start the motor...

Mix 5 Litre of unleaded petrol with 1 bottle of HSS 2-Stroke oil in a suitable container, and fill the fuel tank. Each tank-full gives about 30 minutes use. Never add the oil and petrol to the tank unmixed.

Slide the ON/OFF switch to the ON position and, if starting from cold, set the choke. Pull the blue choke lever fully out and push in the decompression valve. Now, squeeze the throttle and press the trigger lock button to hold the throttle open.

Pull the starter handle a few times until the motor 'coughs', then push in the blue choke lever, push in the decompression valve and pull the starter handle once more. The motor should fire.