

To lower the stabilisers, press and hold the green start button and move one of the four control levers. Move the lever down to lower the stabiliser and up to raise.

Start by operating the two front stabilisers (number 3 & 4) until the jockey wheel is raised off the ground. Next deploy the two rear stabilisers (number 1 & 2) then adjust all the stabilisers until the chassis is level (theres a spirit level on the base), with the road wheels clear of the ground.

The lift should now be ready to use. However, do double-check that all the stabilisers are correctly deployed.

### Doorway Drill

To move the lift through a doorway, deploy the stabilisers to lift the road wheels off the ground. Release the axle lock bars (turn anticlockwise) then pull up the axle location pins. Slide the wheels in towards the chassis until the axle locating pins lock back in position.

Finally, retighten the axle lock bars (turn clockwise).

## BASIC TECHNIQUES

Disconnect the transport catch on the boom rest. Place the safety lock key into the lock on the lower control box and turn clockwise to select the cage controls, then remove the key. Then move the hydraulic selector valve lever to the 'booms' position (lever vertical).

NOTE. If the cage controls are selected before the stabilisers are correctly deployed, a loud klaxon alarm will sound.

Make sure the lift-up safety rail drops back into place after you have climbed into the cage, then secure your personal restraint harness to the fixing point (see illustration).

Insert then turn the safety lock key to ON (clockwise), at the cage-mounted controls.

Now hold in the START button to activate the hydraulic motor, then operate the appropriate control lever as directed on the control panel to position the cage as required.

The first lever tilts the cage back or forward to allow you to keep it level during use. Raise the lever to move the cage forward (in) and lower the lever to move the cage back (out).

The second lever operates the telescopic boom, to extend the boom lift the control lever and to retract, lower the lever.

The third and fourth levers raise/lower the primary and secondary booms respectively, the boom speed depends on how far you push the lever in the appropriate direction.

The fifth lever rotates the lift. If it doesn't operate, you have gone too far in one direction so simply move the lever to rotate the lift in the other direction.

Always begin by lifting the primary boom off its support before positioning the cage.

Upon final descent, rotate the cage to its resting position (opposite the tow hitch).

Carefully lower the primary boom then the secondary boom ensuring it is correctly located onto the boom rest.

At the end of each individual manoeuvre, release both START button and control lever.

### Emergency Descent

If the lift loses power, lower the cage to the ground as quickly as possible, taking care to avoid any obstructions.

Extreme care must be taken to ensure that the person carrying out this procedure does not get trapped in the descending structure.

Each boom can be lowered by operating the ground control levers whilst operating the emergency manual hydraulic pump (see illustration).

Lower the primary boom first followed by the secondary, rotate the lift as necessary to align the cage with the boom rest in stages.

Do not use the boom lift after an emergency descent, remove the key and press all red emergency STOP buttons and contact your local HSS Lift & Shift Depot.

## EQUIPMENT CARE

Never push the equipment beyond its design limits. If it will not do what you want with reasonable ease and speed, assume you have the wrong equipment for the job. Contact your local HSS Lift & Shift Depot for advice.

Keep the equipment clean, you will find this less of a chore if you clean it regularly, rather than wait until the end of the hire period.

When not in use, store the equipment somewhere clean, dry and safe from thieves and unauthorised users.

## FINISHING OFF

Lower the cage onto the boom rest. Turn the safety lock key OFF (anti-clockwise), in the cage-mounted controls. Place the safety lock key into the lock on the lower control box and turn anti-clockwise to 'ground'.

Unless you intend to move the lift by hand to a new work area, ensure the lift is ready for towing.

Raise the four stabilisers to their transport position starting with the two rear (number 1 & 2), followed by the two front (number 3 & 4).

Turn the safety lock key on the lower control box to the OFF position to isolate all controls then remove the key.

Press both red emergency STOP buttons and the battery-isolating button as an extra precaution.

Give the Lift a final clean up ready for return, to your local HSS Lift & Shift Depot.

### Road Safety

Before towing always make sure:-

The axles are fully extended and locked.

The jacking feet and stabilisers are fully retracted and locked.

The lift is correctly fitted to the towing vehicle.

The jockey wheel is raised and locked.

All lights and brakes work and a numberplate is displayed.

When towing this equipment, DO NOT exceed a speed of 45mph.



### ...any comments?

If you have any suggestions to enable us to improve the information within this guide please fax your comments or write to the Product Manager at the address below

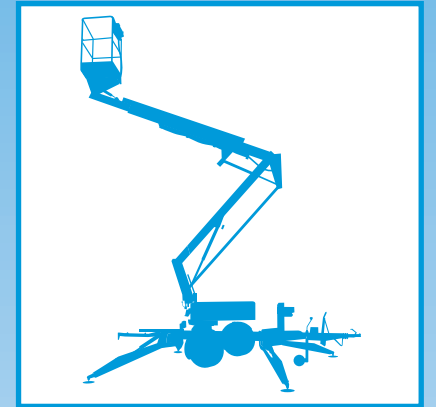
Fax: 020 8687 5001

©HSS Hire Service Group Plc 2000 No. LS107/01

Group Office: 25 Willow Lane, Mitcham, Surrey CR4 4TS

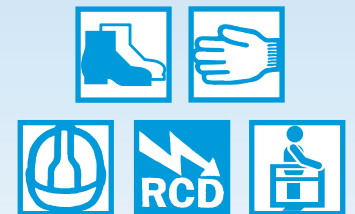
Web Site: <http://www.hss.co.uk/liftandshift>

# HSS Lift & Shift



## Telescopic Boom Lift

A compact access platform, road towable, fitted with hydraulic stabilisers.



## GENERAL SAFETY


For advice on the safety and suitability of this equipment contact your local HSS Lift & Shift Depot.

There is a serious risk of personal injury if you do not follow all instructions laid down in this guide. The hirer has a responsibility to ensure that all necessary risk assessments have been completed prior to the use of this equipment.


This equipment should only be used by an operator who has been deemed competent to do so by his/her employer.

This equipment is designed to be used by an able bodied, competent adult who has read and understood these instructions. Anyone with either a temporary or permanent disability should seek expert advice before using it.

Keep children, animals and bystanders away from the work area. Cordon off a NO GO area using cones and either barriers or tape, available for hire from your local HSS Lift & Shift Depot.

 Never use this equipment if you are ill, feeling tired, or under the influence of alcohol or drugs.

 Wear practical, protective clothing, gloves, footwear and a protective hard hat. Avoid loose garments and jewellery that could catch in moving parts, tie back long hair.

 You are advised to wear a personal restraint harness when using this equipment. Available on sale or return from your local HSS Lift & Shift Depot.

Make sure you know how to operate this equipment safely and are aware of its limitations before you use it.

Make sure that anyone in the immediate work area is warned of what you are doing.

Do not carry large sheet material i.e. glass, plywood or PVC. Never stand or place loads on the cage guardrails.

Never attempt to use the lift unless the stabilisers are fully extended and the feet correctly set on firm, level ground.

Switch OFF and remove the key before leaving the lift unattended.

Never exceed the equipment's safe working load of 200kg.

Never operate the equipment alone. Ensure a competent adult is always within shouting range to operate the emergency descent system or come to your aid if anything should go wrong.

Ensure the tyres are in a roadworthy condition and inflated to 4.5bar (65psi).

This equipment is NOT insulated, do not use the lift within 3 metres of any electrical power line.

Never use the lift in wind speeds greater than 25mph. Do not transport the machine with the cage raised or in the doorway position.

Check the equipment's condition before use and at regular intervals thereafter. If it shows signs of damage or excessive wear, DO NOT USE IT. Return it to your local HSS Lift & Shift Depot.

## ELECTRICAL SAFETY

### Fire Warning

Batteries generate highly flammable and potentially **EXPLOSIVE** hydrogen gas when charging, so, until charging is over and the gas has dispersed...

**ALWAYS** stand the lift in a well-ventilated spot, preferably in the open air.

**ALWAYS** open the battery compartment cover.

**NEVER** smoke or allow naked lights and other ignition sources into the area.

HSS Telescopic Boom-Lifts are powered by a 12V DC battery. Always fully charge before use and recharge at regular intervals.

The battery charger is built in to the unit and can be powered by a 110V or a 230V power supply.

There are two connectors both 16A, the blue is for a 230V supply and the yellow for a 110V supply.

To charge the batteries first check that the power supply lead is fitted with the correct type of socket to suit the supply voltage available (do not connect a 110V supply to the blue connector and vice versa).

Open the cover on the battery compartment.

Connect the supply lead to the respective connector on the unit then plug the lead into the power supply and switch the supply ON.


A red lamp will illuminate to confirm charging is taking place, followed by a green lamp once charging is complete – normally after 8 to 10 hours. If the green lamp flashes, the charge is near completion.

Never operate the lift when charging the battery.

After charging, switch OFF the power supply and disconnect the power supply lead from the charger, coil its flex and close the battery compartment cover.

If the charger fails, return the unit. Do not attempt to repair anything yourself.

Keep the charger dry at all times. Using electrical equipment in wet or damp conditions can be dangerous.

 To reduce the risk of electric shock, always use a suitable RCD (Residual Current-Operated Device) available from your local HSS Lift & Shift Depot.

## GETTING STARTED

Park the lift on firm, level ground and ensure that all stabilisers will be deployed onto a firm footing. **DO NOT** use on slopes, soft ground or where there is a risk of one or more stabiliser subsiding, apply the handbrake and unhook from any towing vehicle.

There are three sets of controls with this unit, one in the cage, one set of ground controls and one set of stabiliser controls.

All three are fitted with a red emergency STOP button which, if pressed, isolate the power in case of an emergency.

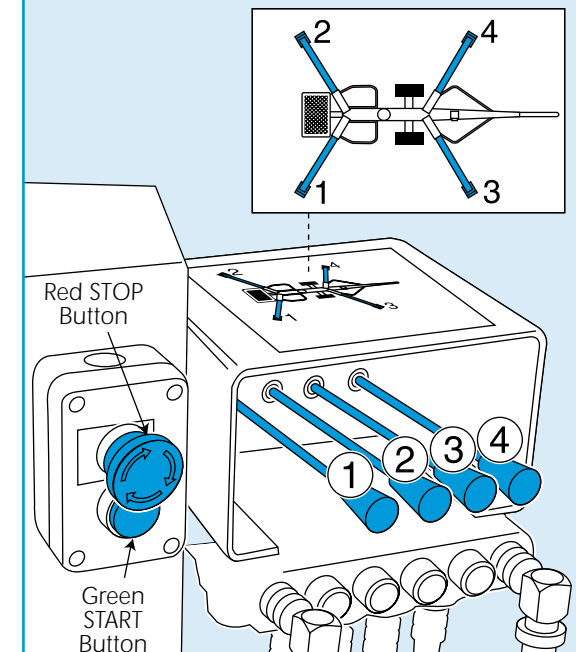
All three STOP buttons **MUST** be in the ON position to operate any part of the controls, if a STOP button has been pressed, reset it by turning clockwise until it pops out.

Set the battery-isolating switch to ON by pulling it out, this switch should be pushed in whenever the unit is left unaccompanied.

Place the safety lock key into the lock on the lower control box and turn anti-clockwise to select the ground controls.

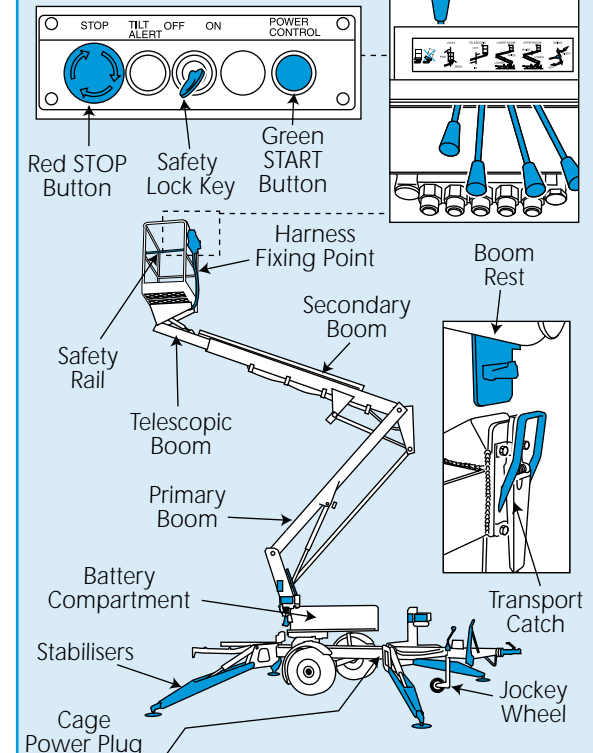
Just below the lower control box is a hydraulic selector valve lever that must be set either to 'stabilisers' (lever horizontal) or 'booms' (lever vertical). The lever must be set to horizontal when operating the stabilisers.

### Stabiliser Controls



## Telescopic Boom Lift

### CAGE CONTROLS



### GROUND CONTROLS

